

CERTIFICATE OF LOCATION OF GOVERNMENT CORNER

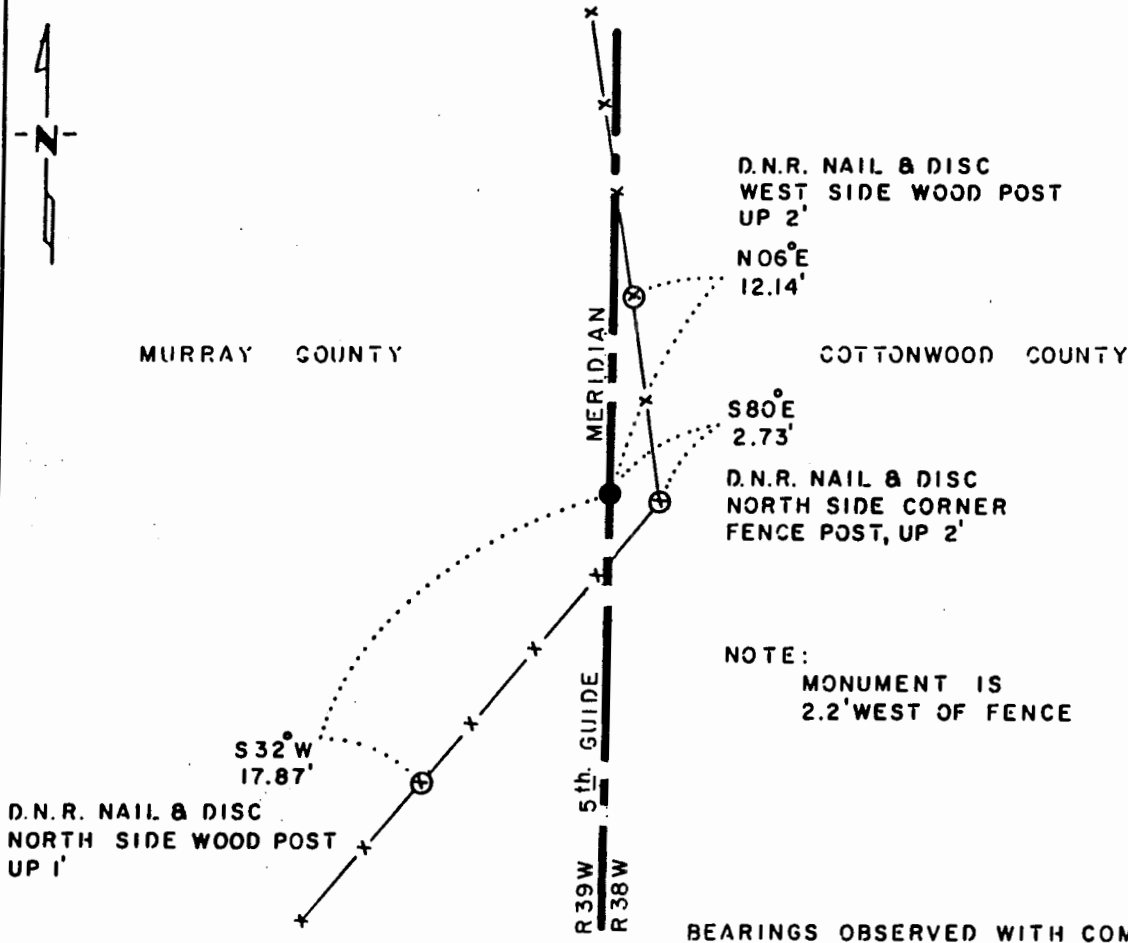
EAST QUARTER Corner of Section 24, Township 105 N., Range 39 W., 5th P.M.

STATE OF MINNESOTA, County of MURRAY

At the corner location shown on the sketch:

- On 5-24-83 found a 1 1/2" x 2 1/2" x 30" IRON BAR, DOWN 13"
DATE
- left monument as found, lowered monument, removed monument (explain)
- On 5-24-83 placed a 1 1/4" x 1 1/4" x 14" PERFORATED STEEL TUBE WITH
DATE
ALUMINUM CAP STAMPED "D.N.R. SURVEY MARKER", UP 0.1' OVER IRON BAR

SKETCH OF REFERENCE TIES



BEARINGS OBSERVED WITH COMPASS

Statement of evidence relative to this corner location is on back of page.

J. B. M. 3-20-85
6-156

I hereby certify that this document and the data contained herein was prepared by me or under my direct supervision.

Bruce W. Shepard 12/20/85
SIGNATURE DATE

Registration No. 17003

- Land Surveyor, Professional Engineer
- County Surveyor, County Engineer

OFFICE OF THE COUNTY RECORDER

County of _____

I hereby certify that this document was filed in the Co. Recorders office at _____ M. on the _____ day of _____ A.D., 19 _____

County Recorder _____

By _____, Deputy

DOCUMENT NO. _____

East Quarter Corner Section 24, Township 105 North, Range 39 West

This corner was originally established by the U. S. General Land Office survey in 1857. The government notes show:

set post deposited charcoal, made mound, trench, and pits and planted plum seed northeast and southwest.

In April 1983, the DNR Bureau of Engineering contacted the following for corner information:

Cottonwood County Offices of the Recorder and Highway Engineer
Murray County Offices of the Recorder and Highway Engineer
Sioux Engineering of Windom
Martin Land Surveying of Worthington

The following information was obtained from the Cottonwood County Recorder's Office:

Plat 49 contains a resurvey of Township 105 North, Range 38 West done by C. W. Gove, County Surveyor, in 1898. Plat shows that corner was established:

2640 feet from the northeast corner of Section 24

342 feet from meander corner number 4

A 1½" by 2½" by 30" cast iron stake was set to mark this location.

The following information was obtained from the Office of Sioux Engineering:

A copy of a resurvey plat of Township 105 North, Range 38 West, obtained from Howard Boeck of Westbrook, and done by C. W. Gove, County Surveyor, in 1898, shows corner but does not indicate what was found or set. Corner is shown:

2640 feet from the northeast corner of Section 24

342 feet from meander corner number 4

The following information was obtained from the Cottonwood County Recorder's Office:

A resurvey plat of Township 105 North, Range 38 West done by C. W. Gove, County Surveyor, in 1898, shows corner but does not indicate what was found or set. Corner is shown:

2640 feet from the northeast corner of Section 24

342 feet from the meander corner number 4

The following information was obtained from the DNR Bureau of Engineering's Office:

In 1952, a government brass disc was found at corner.

In May 1983, the DNR Bureau of Engineering traversed to the area of the corner and found a 1½" by 2½" by 30" long iron bar. The iron bar was found to be 2641.28 feet from the northeast corner of Section 24.

Accept the iron bar as the location of the corner.

Traverse information is available from the DNR Bureau of Engineering.

61hab